

PaperCut MF™

Complete control over print, copy, scan and fax

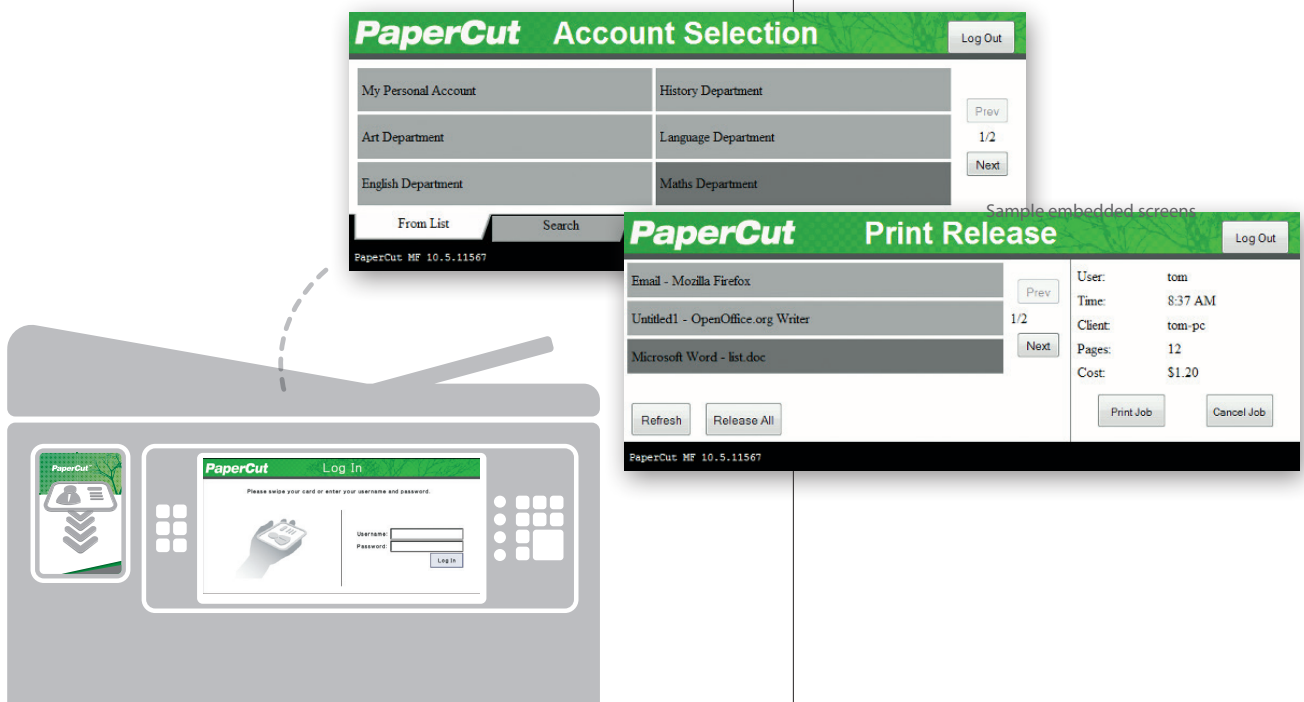
PaperCut MF is a simple, low cost software application that lets you take control of your printers, copiers and multi-function devices.

Minimize waste, encourage responsible behavior and make users and departments accountable for print usage.

PaperCut MF includes embedded software that runs on your Sharp OSA®-enabled MFP to enable tracking, control and secure print release directly from the device's panel.

PaperCut MF is suitable for customer sites of any size, with a cross-platform and vendor-neutral approach to technology and device support. PaperCut's solutions are currently in use in over 50,000 sites worldwide and translated into 20 languages, making PaperCut MF a product you can trust with a high return-on-investment.

- *Track all MFPs / Printers*
- *Secure Print Release*
- *Control and Report Use*
- *Recover Costs*
- *Enforce Print Policies*
- *Minimize Waste*
- *Web Printing*

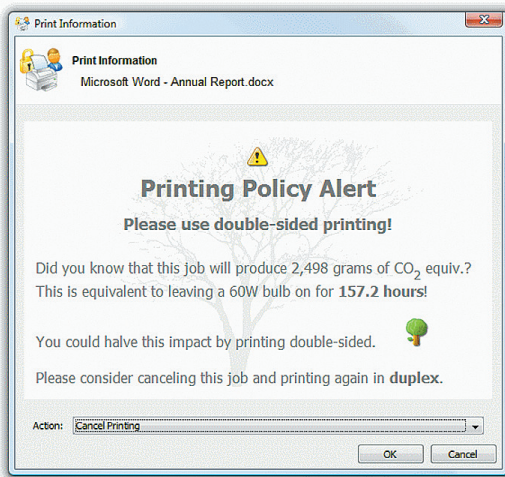


Why PaperCut MF?

Intuitive and Easy to Use

PaperCut MF is regarded as the simplest system of its type to deploy and manage. System administrators have full access to administration and configuration via a familiar web interface. It offers:

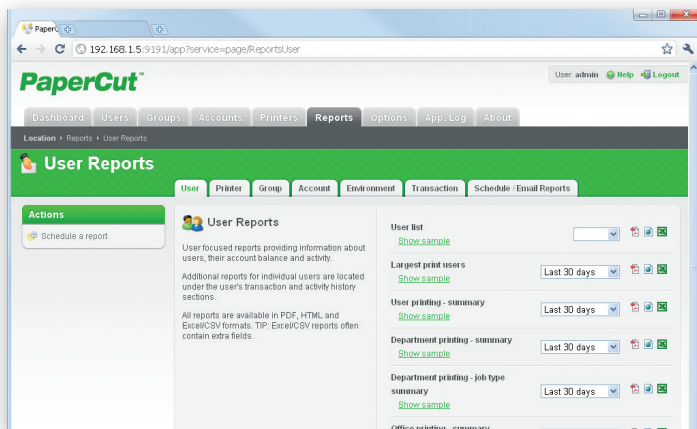
- User directory (e.g. Active Directory and others) integration and automatic user account creation
- Secure print release and *Find-Me* printing
- Administrator dashboard with real-time status updates
- Print Archiving for a visual review of job content
- Optional client and account billing
- Ability to encourage responsible use via popup notifications



Detailed Reporting

PaperCut includes over 80 one-click reports available for online viewing, printing or export. Reports address all areas ranging from detailed page logs to summaries by user, department, device or environmental impact. Administrators can create ad-hoc reports by applying filter conditions and reports can be emailed to specified people on a regular schedule.

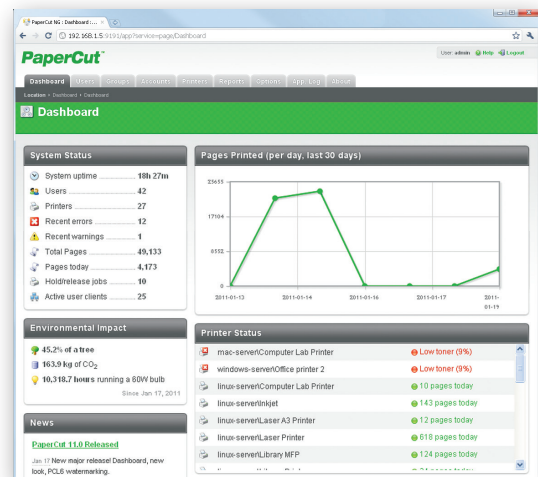
More information is at www.papercut.com/tour/report/



Web Based Administration

PaperCut MF provides “out of the box” browser-based administration access from any network location enabling centralized management of every user and device. Web technologies make cross-platform support easy as there is no need for additional software to be installed and no web server configuration.

A key feature of the administration interface is the dashboard tab – an easy-to-read single page view of the printing environment for administrators. The Dashboard page utilizes a number of gadgets to present key real time information such as system activity and status updates, along with trend information and statistics from past activity such as number of pages printed and environmental impact measures.



Powerful Job Scripting

Advanced scripting can be used to define and finely tune your printing policy, and support your organization in eliminating waste and changing user behavior.

With PaperCut you can:

- Automatically route large jobs to detected high volume printers
- Discourage printing of e-mails via popup print policy warnings
- Convert jobs to grayscale and duplex
- Discourage or disable color printing by user group
- Least cost routing (suggest more cost effective devices based on conditions)
- Allow free printing (e.g. during class times)
- Define action by job attribute, user / group, period of day, device feature / type.

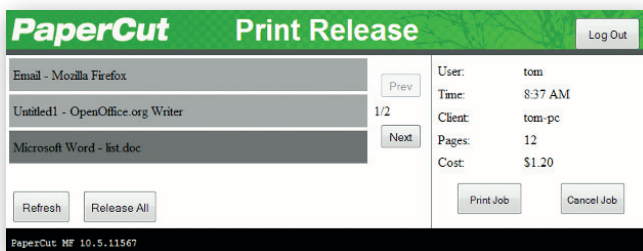


See environmental impact at a glance with the Paper-Less Alliance widget

Secure Print Release

PaperCut's *Find-Me* printing feature enables users to print to a global virtual queue. Jobs are paused and only printed when the user releases the job at any compatible MFP/prINTER:

- Improved document security and convenience.
- Reduce IT administrators' need to manage multiple print drivers and queues for both workstations and notebooks.
- *Find-Me* printing minimizes waste and has been shown to reduce printing output by up to 20% in busy office environments.
- Support for multiple release methods ranging from auto release on authentication to active release job-by-job.



End users can view and manage held print jobs at the MFD

Secure Device Access

Today's MFPs are smart. They have touch screens and the ability to run software directly on the panel. PaperCut leverages this technology to bring new features to each device.

One of the key features is user authentication – only allowing device access to authorized users. At the simplest level users can authenticate with network user-name and password via an on-screen keyboard. In addition many environments will implement ID card authentication. Card numbers can be extracted from your network's user directory or a database (e.g. door access control system), or users can self-associate their card on first-use. Card types include magnetic stripe, proximity (HID, Mifare & Legic) and bar codes.

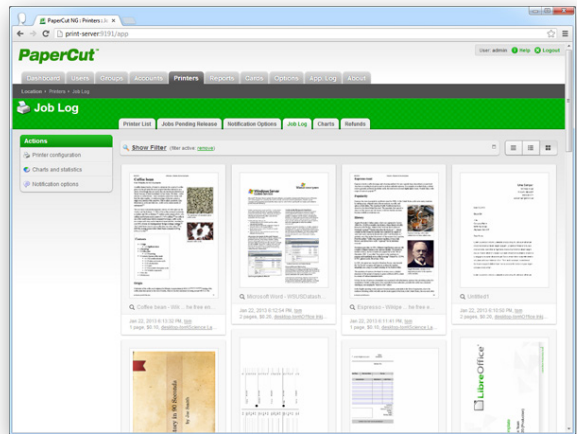
PaperCut supports many brands of USB card readers including RF IDEas, Elatec and Omnikey. Off the shelf standard USB and network card readers are available from leading suppliers. PaperCut has a global network of hardware experts (Authorized Solutions Centers) should you require technical assistance, advice or on-site support of both software and hardware.



Print Archiving & Watermarking

PaperCut administrators can utilize these features to ensure users are accountable for their printing.

PaperCut's Print Archiving empowers approved administrators to browse and review the content of print activity within their environment. Alongside the powerful tracking and reporting functionality built into PaperCut, this gives system administrators a wide range of auditing functions.



Use PaperCut Print Archiving to locate jobs visually.

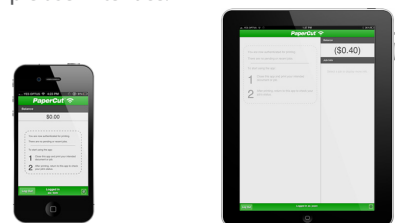
Watermarking can automatically add a user-name or other metadata to the bottom of every page (e.g. to indicate the document owner.) Watermarking may include a unique digital signature which allows you to track document origin to enhance security and encourage responsible printing.

Printed by Sally at 08/03/2011 3:46:43 PM



iPad®, Mobile and Driverless Web Printing

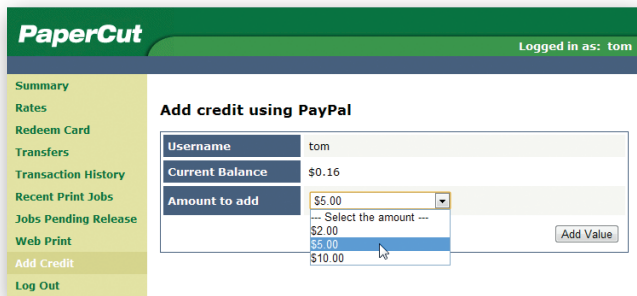
The introduction of iPads®, mobile devices, tablets, netbooks and BYO devices have brought a new set of challenges to the printing landscape. PaperCut can help solve these problems with native iPad print support and web-based driverless printing – core features in PaperCut. Users of these devices have access to the full range of features including authenticating, account selection and 'find-me' printing in a simple user interface.



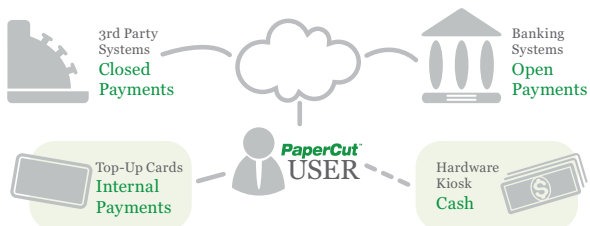
PaperCut in Education

Payment Gateways

Give end users the ability to make payments into their PaperCut account using payment gateways. Payment gateways allow third party systems to connect to PaperCut in a supported manner. Common gateways include leading providers like PayPal® and Authorize.Net® which allow real-time online payments via credit card. PaperCut also supports closed or internal payment systems such as a main college funds account. Hardware gateways are available to support a range of cash loaders, self-service kiosks and bill and coin boxes. For hardware, please refer to a PaperCut MF Authorized Solution Center.



End users can easily manage their account balances and add credit via online and onsite methods



User Web Interface

End users have access to a set of web tools to track their own activity in real-time, query their account balances, and view their transactions – without the need for intervention from administrators. The end user interface is fully customizable, so you can design a look and feel to match your website or intranet pages.

Managing Quotas

Users can operate in either credit or debit, with defined account rules including how and how often an account is credited. Use network groups to define how additional quota/credit is assigned; for example, allow a specific group of users to accumulate their quota while others operate on a “use it or lose it” basis.

Pre-Paid/Top-Up Cards

PaperCut MF comes with a simple to implement voucher system for purchasing additional print credit. Administrators can print out a batch of single-use cards with a pre-defined value. Users redeem cards by entering the card's unique code on a web page.

Technical Specifications

Scalability:

- Suitable for networks of 5 to 500,000+ users

Architecture:

- Single server or multi-server environments
- Monitor locally attached printers
- Client software is optional
- Available in 20+ languages and currency formats worldwide

Licensing:

- Enterprise-wide license: unlimited printers, servers, and workstations
- Licensed based on number of end users, plus a per-device license for MFD's running embedded software
- Product Support included for first 12 months

Open Systems:

- Open documented database schema
- XML Web Services API with sample code

Supported Server

Operating Systems:

- Microsoft® Windows Server (any edition including 64-bit and server core)
- Mac® OS X Server (10.6 or higher)
- Linux® (any modern distribution)
- Novell® OES Linux and iPrint

Supported User

Directory Services:

- Active Directory (native integration including nested groups and OU's)
- OpenDirectory
- eDirectory
- LDAP
- NIS, PAM, Samba, and others.

Supported Workstation Operating Systems:

- Microsoft® Windows (any edition)
- Mac® OS X (10.5 and above)
- Linux® (any modern distribution)
- Unix® Workstation (Java required to run client software)

MFPs/Printers:

- Almost all major digital laser, inkjet and wide format devices supported
- Supported print languages: PCL, PCL6, HPGL, Postscript, PCL-GUI, Ricoh RPCS, Epson ESC, QPDL, various GDI printers and many languages that don't even have names

Supported Database Servers:

- Self managing internal database: suitable for up to 5,000 end users
- Microsoft® SQL Server 2000/2005/2008/2012 (either 32 or 64 bit)
- Microsoft® SQL Express 2005/2008/2012 (free from Microsoft)
- PostgreSQL 7.1 or higher
- MySQL 5.0 or higher
- Oracle® 9.2 or higher

Supported Cluster Environments:

- Microsoft® Failover Server
- Microsoft® Cluster Server
- Veritas® Cluster Server
- Linux® HA

Encryption:

- SSL encryption used for sensitive client server communication.

© Copyright 1999-2013. PaperCut Software International Pty Ltd. All rights reserved.

Sharp, Sharp OSA and all related trademarks are trademarks or registered trademarks of Sharp Corporation and/or its affiliated companies. PaperCut is a trademark of PaperCut Software International Pty Ltd. iPad is a registered trademark of Apple Inc. PayPal is a registered trademark of PayPal, Inc. Authorize.Net is a registered trademark of the Company. Windows and Microsoft are registered trademarks of Microsoft Corporation in the United States and other countries. Mac is a registered trademark of Apple Inc. UNIX is a registered trademark of The Open Group. Novell is a registered trademark of Novell, Inc., in the United States and other countries. Linux is a registered trademark of Linus Torvalds. Oracle is a registered trademark of Oracle Corporation. Veritas is a registered trademark of Veritas Software Corporation in the USA and/or other countries. All other trademarks are the property of their respective owners.